

Breast Cancer Trainee Retreat

The Retreat at Artesian Lakes, Cleveland, TX

Day 1 Schedule

Thursday, November 13

09:30-10:30am	Registration and Poster set-up	
10:30-10:40am	Introduction- Steffi Oesterreich, Ph.D.	
10:40-11:00am	State of the Union- C. Kent Osborne, M.D.	
11:00-12:00am	Keynote Speaker – Kate Horwitz, Ph.D. University of Colorado Health Sciences Center, Denver Steroid Receptors, Breast Cancer Metastasis and Cancer Stem Cells	
12:00-01:00pm	Lunch	
01:00-01:30pm	Session 1:	Poster Winners from 3rd Annual Retreat 2007 <i>Chair: Stephanie Greene</i>
01:00-01:15pm	Rodrigo Cabrera	Regulation of the proteasome by Yin6/Int6 and an actin regulatory protein, Arc3
01:20-01:30pm	Albert Chen	Mucin-4 in HER2-overexpressing breast cancer: Biomarker or potential drug target?
01:30-02:30pm	Session 2:	Hormone Receptors and Kinases <i>Chair: Beate Litzenburger</i>
01:30-01:45pm	Corey Speers	Identification of novel kinase targets for the treatment of estrogen receptor-negative breast cancer
01:45-02:00pm	Ines Barone	The K303R ER α Mutation Confers Resistance to an Aromatase Inhibitor.
02:00-02:15pm	Jason Garee	Sumoylation of corepressor SAFB1- mechanism of action and biological relevance in breast cancer
02:15-02:30pm	Janagi Thirugnanasampanthan	Androgen Receptor and Breast Cancer Hormone Resistance
02:30-03:00pm	Coffee Break	
03:00-03:40pm	Session 3:	Faculty Talks <i>Chair: Wen Bu</i>
03:00-03:20pm	Brian Hennessy MD Anderson Cancer Center	Proteomic analysis of the PI3K pathway in cancer
03:20-03:40pm	Weston Porter Texas A&M University	The bHLH/PAS transcription factor Singleminded-2s in Breast Cancer
03:40-06:00pm	Free Time (with optional sport event)	
06:00-07:00pm	Poster Discussion with wine and cheese – Odd Numbered Posters	
07:00pm	Dinner	

Day 2 Schedule

Friday, November 14

08:00-09:00am	Breakfast	
09:00-10:00am	Session 4:	Novel Mouse Models <i>Chair: Simeen Malik</i>
09:00-09:15am	Adriana Visbal	The role of hedgehog signaling in mammary gland development
09:15-09:30am	Torey Batts	Investigating the role of stem cell antigen-1 in the mammary gland
09:30-09:45am	Michael Toneff	The ER-status of the cell of breast cancer origin affects tumor ER-status
09:45-10:00am	Catherine Huang	The $\alpha_6\beta_1$ integrin and its critical role in promoting resistance to treatment strategies for breast cancer
10:00-10:30am	Coffee Break	
10:30-11:15pm	Session 5:	DNA Damage and Instability <i>Chair: Joel Otero</i>
10:30-10:45am	Petra Den Hollander	Discovery of functional genomic breakpoints in breast cancer.
10:45-11:00am	Mei Zhang	Radiation resistance of tumor initiating cells in p53 null mammary gland tumor
11:00-11:15am	Jay Reddy	Somatic, Not Transgenic, Oncogene Expression Induces a DNA Damage Response in the Mouse Mammary Gland
11:20-12:00pm	Session 6:	Faculty Talks <i>Chair: Qiang Shen</i>
11:20-11:40am	Wendy Woodward MD Anderson Cancer Center	Stem cell models from human pleural effusions
11:40-12:00am	Rebekah Drezek Rice University	Nanotechnology-Enabled Optical Molecular Imaging of Breast Cancer
12:00-01:00pm	Lunch	
01:00-02:15pm	Panel Discussion	Career Development
02:15-03:00pm	Session 7:	ER and Growth Factor Signaling <i>Chair: Alexandra Richter</i>
02:15-02:30pm	ChunYu Wang	Transcription Factor Crosstalk is Required for Estrogen-induction of c-Myc
02:30-02:45pm	Ze-Yi Zheng	Identification of Ras compartment-specific interacting proteins
02:45-03:00pm	Angelo Casa	Evidence for unique mechanisms of estrogen receptor degradation elicited by estradiol and ICI 182,780 (Fulvestrant)
03:00-03:30pm	Coffee Break	
03:30-04:10pm	Session 8:	Faculty Talks <i>Chair: Robert Dearth</i>
03:30-03:50pm	Viroj Boonyaratanakornkit Baylor College of Medicine	Role of progesterone receptor extra-nuclear signaling in mammary epithelial cell differentiation and transformation
03:50-04:10pm	Wei Li Baylor College of Medicine	A Genomic View of Epigenetic and Transcriptional Regulation in Cancer
04:10-06:00pm	Free Time (with optional sport event)	
06:00-07:00pm	Poster Discussion with wine and cheese – Even Numbered Posters	
07:00pm	Dinner	

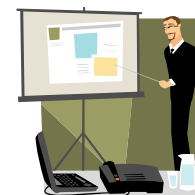
Breast Cancer Trainee Retreat

The Retreat at Artesian Lakes, Cleveland, TX

Day 3 Schedule

Saturday, November 15

08:00-09:00am	Breakfast	
09:00-10:00am	Session 9:	PTMs and Translation <i>Chair: Kyle Covington</i>
09:00-09:15am	Rachel Atkinson	Breast cancer stem cells and therapeutic resistance
09:15-09:30am	Jiang Shou	Akt-dependent phosphorylation on AIB1 serine 967 contributes to breast cancer tamoxifen resistance
09:30-09:45am	Jinfeng Suo	Int6 is a dual regulator for both the proteasome and eIF3 and critical for proper formation of acini in human mammary epithelium
09:45-10:00am	Benny Kaiparettu	Scaffold attachment factor-1 (SAFB1) regulates HOX gene expression in mouse embryonic fibroblasts
10:00-10:30am	Coffee Break	
10:30-11:10am	Session 10:	Faculty Talks <i>Chair: Jie Dong</i>
10:30-10:50am	Heather West Baylor College of Medicine	Communication of Treatment Goals in Breast Cancer
10:50-11:10am	Mo Rimawi Baylor College of Medicine	New Developments in Breast Cancer Clinical Studies
11:10-11:40am	Susan Hilsenbeck	Modeling Mouse Tumor Growth Curves
11:40-12:00pm	Awards Announcement/ Closing Statement	
12:00pm	Depart	



Breast Cancer Trainee Retreat

The Retreat at Artesian Lakes, Cleveland, TX

Poster Discussion

Odd # Posters – Thursday, November, 13 th , 6:00-7:00pm		
Poster #1	Lauren Brusco	Effects of the microenvironment on the Rho signaling pathway and on the metastasis of estrogen receptor α -positive breast cancer cells
#3	Bonita Chan	Signaling pathways critical for insulin receptor substrate (IRS)-mediated disruption of MCF-10A acini formation
#5	Chiang-Min Cheng	Compartmentalized Ras proteins transform NIH3T3 cells with different efficiencies
#7	Robert Dearth	Increased levels of circulating IGF-I does not affect initiation/promotion of ErbB2-induced mammary tumorigenesis
#9	Stephanie Greene	miRNAs in the mammary gland
#11	Ryan Hartmaier	Association studies in estrogen receptor- α cofactors: from SNP discovery, to <i>in vitro</i> functional screening, to genotyping for clinical associations
#13	Simeen Malik	Estrogen-mediated repression of <i>Reprimo</i> – role of estrogen receptor α and HDAC7
#15	Adam Pond	The role of fibroblast growth factor receptor signaling in mammary gland development and breast cancer
#17	Kevin Roarty	Impaired TGF- β Signaling and Loss of <i>Wnt5a</i> Enhance WNT/ β -Catenin Activity in Mammary Tumors
#19	Qiang Shen	Role of the AP-1 transcription factor in cancer metastasis
#21	Yu-Fen Wang	Characterization of the physiological roles and prognostic importance of IR/IGF-IR hybrid receptors in breast cancer

Breast Cancer Trainee Retreat

The Retreat at Artesian Lakes, Cleveland, TX

Poster Discussion

Even # Posters – Friday, November, 14th, 6:00-7:00pm		
Poster #2	Wen Bu	Keratin 6 positive cells in MMTV-Wnt-1 tumors can initiate tumors and express mammary stem cell markers
#4	Edmund Chang	Novel lineage tracing of tumor-initiating cell population by lentiviral barcoding strategy
#6	Kyle Covington	Metastasis Tumor Associated 2-overexpression alters Rho pathway expression and enhances the metastatic behavior of breast cancer cells
#8	Jie Dong	STAT5a-induced precocious differentiation sensitizes mammary cells to ErbB2 transformation
#10	Jason Herschkowitz	Similarities between p53 null spindle murine mammary tumors, human claudin-low breast cancers, and tumorigenic stem cells identified by comparative oncogenomics.
#12	Heetae Jeong	Ras localizes and functions in mitochondria to regulate ROS, aging, and energy utilization
#14	Joel Otero	Int6 and Moe1 interact with Cdc48 to regulate endoplasmic reticulum associated degradation (ERAD) and chromosome segregation
#16	Alexandra Richter	Role of posttranslational modification leading to decreased coactivation of SRC-1 P1272S
#18	Zhe Sha	Regulation of proteasome mobility and nuclear import by Yin6
#20	Yen-Chao Wang	Crosstalk between the estrogen receptor and HER2 reveals an important resistance mechanism to HER2-targeted therapy