

Breast Program Trainee Retreat

Del Lago Resort, Lake Conroe, TX

Day 1 Schedule

Friday, October 20

9:30-11:00am	Registration and Poster set-up in Magnolia Conference Room	
11:00- 11:10am	Introduction- Steffi Oesterreich, Ph.D.	
11:10-11:20am	WELCOME- C. Kent Osborne, M.D.	
11:20-11:40am	Richard Elledge, M.D. Update on Clinical Trials in Breast Cancer	
12:00-1:00pm	Lunch	
1:00-2:00pm	Session 1:	Past Poster Winners <i>Chair: Steffi Oesterreich, Ph.D.</i>
1:00-1:15pm	Joel Otero E. Chang lab	"Int6 and Moe1 interact with Cdc48 to regulate spindle dynamics"
1:20-1:35pm	Simeen Zubairy Oesterreich lab	"Estrogen-mediated repression of Reprimo – Role of ER α and corepressors"
1:35-2:00pm	Coffee Break	
2:00-3:00pm	Poster Discussion – Even Numbered Posters	
3:00-4:00pm	Session 2:	Imaging in the Clinic and the Laboratory <i>Chair: Eva Sevick, Ph.D.</i>
3:00-3:15pm	Lakshmi Sampath Sevick lab	"Dual-labeled Herceptin-based imaging agent for <i>in-vivo</i> detection of HER2 overexpression in breast cancer"
3:20-3:35pm	Amy Hassan Lee lab	"Magnetic resonance imaging with gadolinium-filled carbon nanotubes"
3:40-3:55pm	Zhe Sha E. Chang lab	"Regulation of proteasome dynamics and assembly by <i>int6/yin6</i> "
4:00-7:00pm	FREE TIME	
5:00-6:00pm	Volleyball game (Optional)	
7:00pm	Hawaiian Luau Dinner	



Breast Program Trainee Retreat

Del Lago Resort, Lake Conroe, TX

Day 2 Schedule

Saturday, October 21

8:00-9:00am	Breakfast	
9:00-10:15am	Session 3:	Stem Cells, Cancer, and Cancer Stem Cells <i>Chair: Mike Lewis, Ph.D.</i>
9:00-9:15am	Adriana Visbal Lewis lab	"The role of hedgehog signaling in mammary gland development"
9:20-9:35am	Fariba Behbod Rosen lab	"Distinct cancer stem cells mediate heterogeneity among premalignant lesions"
9:40-9:55am	Jennifer Selever Fuqua lab	"Breast cancer stem cells play a role in tamoxifen resistance"
10:00-10:15am	Xiaoxian Li J. Chang lab	"Breast cancer stem cells are responsible for therapeutic resistance and residual disease"
10:15-10:45am	Coffee Break	
10:45-11:00am	Session 4:	ARCs and GAPs <i>Chair: Eric Chang, Ph.D.</i>
10:45-11:00am	Rodrigo Cabrera E. Chang lab	"Regulation of the proteasome by Yin6/Int6 and an actin regulatory protein, Arc21"
11:05-11:20am	Tracy Vargo-Gogola Rosen lab	"A novel role for p190-B RhoGAP as a critical regulator of mitosis and cytokinesis"
11:30-11:50am	Session 5:	Chalk Talk <i>Chair: Rachel Schiff, Ph.D.</i>
11:30-11:40am	Jian Huang, M.D.	"The role of Tetraspanin in cross-talk between membrane ER and EGFR in breast cancer"
11:40-11:50am		"Update on the Pathology Core Resource"
12:00-1:00pm	Lunch	
1:00-2:00pm	Poster Discussion – Odd Numbered Posters	
2:00-3:00pm	Session 6:	Mouse Models <i>Chair: Yi Li, Ph.D.</i>
2:00-2:15pm	Wen Bu Li lab	"A novel mouse model of breast cancer generated by targeting oncogenes selectively into keratin 6 positive cells"
2:20-2:35pm	Brandy Heckman Rosen lab	"p190-B and insulin growth factor signaling pathways in mammary bud development"
2:40-2:55pm	Yuxin Li Brown lab	"The rexinoid, LG100268, prevents the development of pre-invasive and invasive ER-negative tumors in MMTV-erbB2 mice"
3:00-3:30pm	Coffee Break	

Breast Program Trainee Retreat

Del Lago Resort, Lake Conroe, TX

Day 2 Schedule continued

Saturday, October 21

3:30-4:30pm	Session 7:	Growth Factor Signaling <i>Chair: Adrian Lee, Ph.D.</i>
3:30-3:45pm	Xiaojiang Cui Lee lab	"Insulin receptor substrate-2, a bona fide insulin and IGF signaling protein, is regulated by NF- κ B transcription factors to control breast cancer cell invasion"
3:50-4:05pm	Xueyan Duan Lin lab	"PPM1A functions as a Smad phosphatase to terminate TGF β signaling"
4:10-4:25pm	Lu Chen Brown lab	"Blockade of p38 signaling inhibits the growth of breast cancer cells"
4:30-7:00pm	<i>FREE TIME</i>	
5:00-6:00pm	Soccer or kickball (Optional)	
7:00pm	Dinner Cruise on lake	



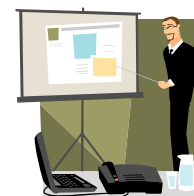
Breast Program Trainee Retreat

Del Lago Resort, Lake Conroe, TX

Day 3 Schedule

Sunday, October 22

8:00-9:00am	Breakfast	
9:00-10:00am	Session 8:	Estrogen Receptor Function <i>Chair: Powel Brown, M.D., Ph.D.</i>
9:00-9:15am	Valerie Cuba Brown lab	“Cell cycle regulator, BTG2 is an estrogen-regulated gene”
9:20-9:35am	Jiang Shou Osborne/Schiff lab	“Akt-induced AIB1 phosphorylation at serine 967 causes the agonist activity of tamoxifen and breast cancer endocrine resistance”
9:40-9:55am	Jay Wang Oesterreich lab	“Identification and characterization of nonsynonomous single nucleotide polymorphism in estrogen receptor coregulators”
10:00-10:30am	Coffee Break	
10:30-11:30am	Session 9:	Chalk Talks <i>Chair: Suzanne Fuqua, Ph.D.</i>
10:30-10:40am	Kay Blanchard, M.D., Ph.D.	“3D growth of breast cancer cells and an <i>in vitro</i> model”
10:45-10:55am	Mamta Kalidas, M.D.	“BMI in minority women at high risk”
11:00-11:10am	Xia Lin, Ph.D.	“Regulation of Smads and TGF-beta signaling”
11:30am	Awards Announcement/ Closing Statement <i>Eric Chang, Ph.D., Mike Lewis, Ph.D.</i>	
12:00-1:00pm	Lunch	
1:30pm	Depart	



Breast Program Trainee Retreat

Del Lago Resort, Lake Conroe, TX

Poster Discussion

Even # Posters – Friday, October 20th, 2:00-3:00pm

Poster #2	Cheng, Chiang-Min	Selectivity of Ras signaling in tumor formation
#4	Du, Zhijun	Estrogen receptor status of breast cancer is influenced by the cell of origin
#6	Huang, Catherine	The role of $\beta 1$ and B4 integrins in endocrine and anti-HER therapy resistance in breast cancer
#8	Kaipparettu, Benny	Estrogen-mediated down-regulation of CD24 in breast cancer cells
#10	Landis, Melissa	Targeting breast cancer stem cells
#12	Peddibhotla, Sirisha	Checkpoint1 is necessary for completion of cytokinesis to prevent genomic stability
#14	Sharma, Ruchi	NIR-fluorescent optical imaging for mapping lymphatic vasculature
#16	Shore, Amy	Revealing the function of a noncoding RNA in the postpubertal mammary gland
#18	Strecker, Tracy	Lapatinib, a dual tyrosine-kinase inhibitor of ErbB1 and ErbB2, blocks signal transduction pathways and suppresses the development of estrogen receptor-negative breast cancer
#20	Thirugnanasampanthan, Janagi	Role of androgen receptor in tamoxifen resistance in breast cancer
#22	Xian, Wa	The duration of FGFR1 and FGFR2 signaling differentially regulates cell survival and invasion

Odd # Posters – Saturday, October 21st, 1:00-2:00pm

Poster #1	Batts, Torey	Localization and characterization of the mammary gland & breast cancer stem cell niche
#3	Dong, Jie	ID4 is required for normal mouse mammary gland development
#5	Greene, Stephanie	Identification of microRNAs involved in normal mammary gland development and breast cancer
#7	Jeong, Hee Tae	Regulation of Ras localization and function
#9	LaMarca, Heather	CCAAT/enhancer binding protein beta and mammary stem cell self-renewal
#11	Litzenburger, Beate	Small molecule inhibitor BMS-536924 completely reverses IGF-IR-mediated transformation of immortalized mammary epithelial cells
#13	Qin, Lanfang	The role of FKHR in repressing estrogen receptor signaling and mammary gland development, involution, and tumorigenesis
#15	Shen, Qiang	The AP-1 transcription factor regulates breast cancer cell growth via cyclins and E2F factors
#17	Siwko, Stefan	Investigating the role of mammary stem cells in the cancer-preventive effect of a completed young-age pregnancy
#19	Suo, Jinfeng	Study of a potential breast tumor suppressor gene, int6
#21	Uray, Ivan	Identification of nuclear hormone receptors involved in the growth suppressive activity of the rexinoid LGD1069
#23	Zhang, Mei	Identification and characterization of mouse tumor-initiating cells using a p53 null mammary gland mouse model